



Thank You.

You have successfully downloaded your free plan from WoodworkingDownUnder.com.

[Go to Page 1](#)

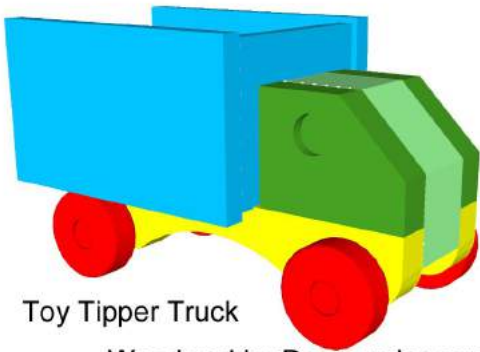
[How to Print Plans to Scale](#)

More Wooden Toy Truck Plans



Mk 1

[Vintage lever operated tipper truck](#)



Toy Tipper Truck

WoodworkingDownunder.com

Mk 2

[Mid size toy tipper truck](#)



Mk 4

[Micro flat bed toy truck](#)

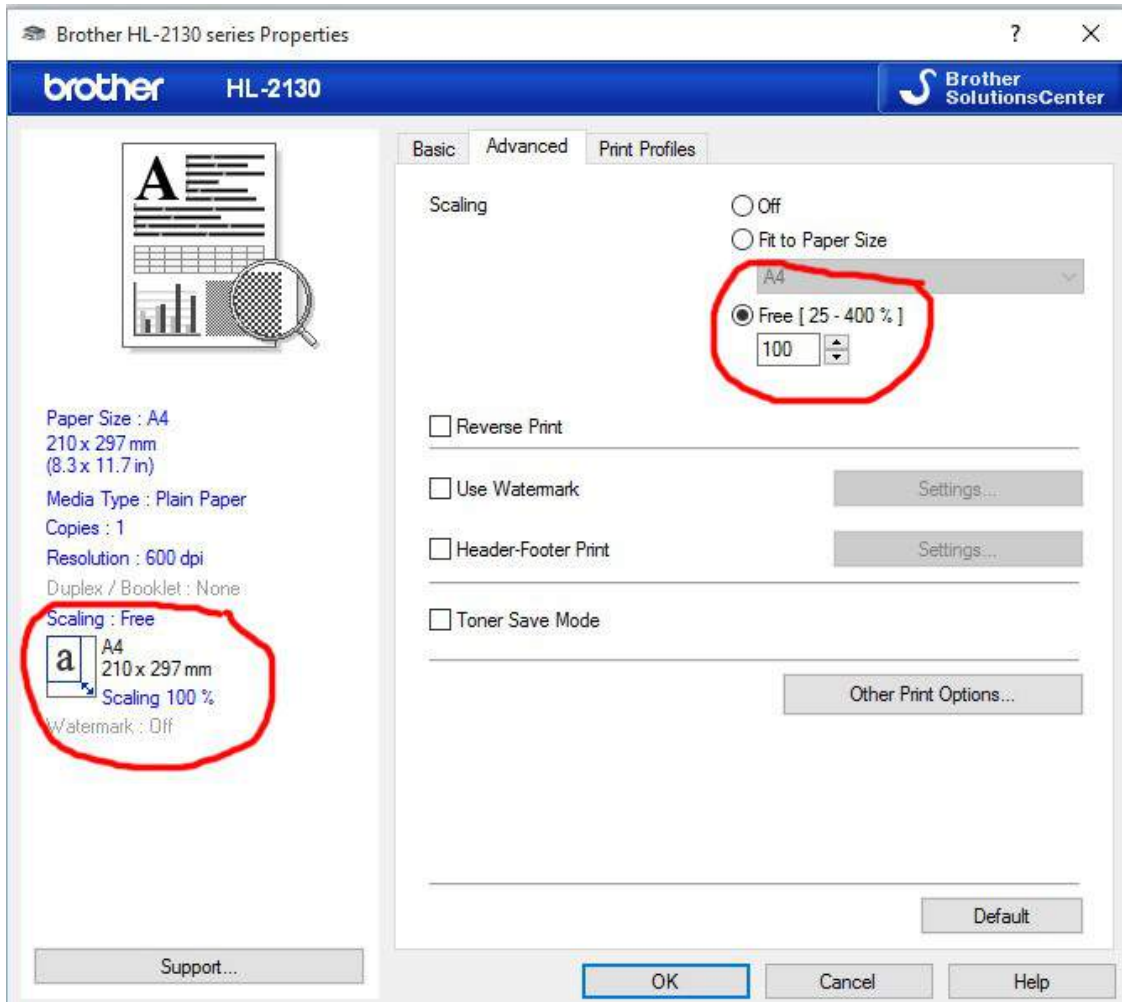


How To Print Plans To Scale.

How to print the PDF file you have downloaded.

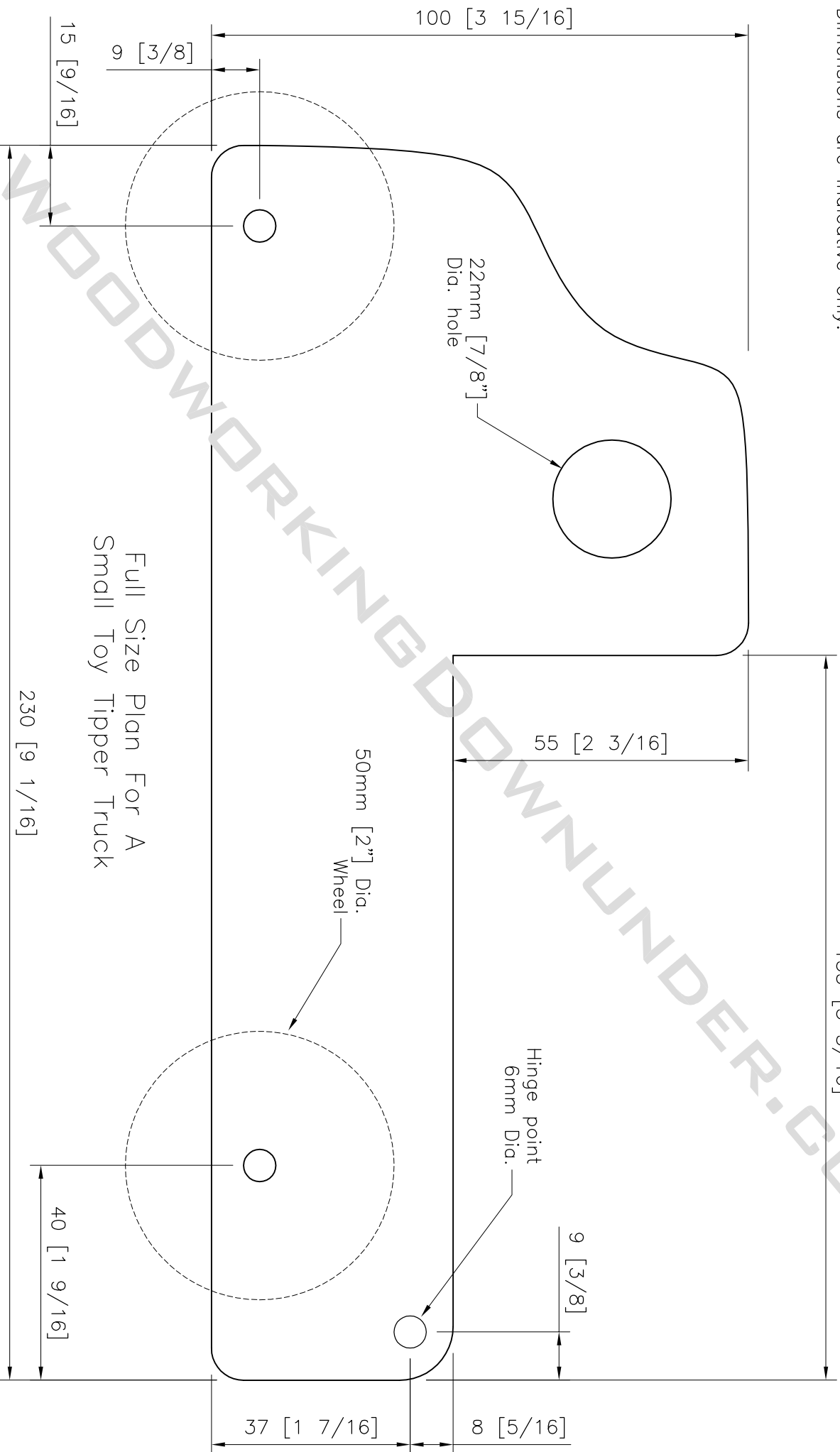
These plans are made to fit an A4 sheet of paper. It is important to print the plans at a 100% scale.

This is an example of a Brother HL-2130 printer. This page is accessed through the Properties tab.



Example: Print 100% scale

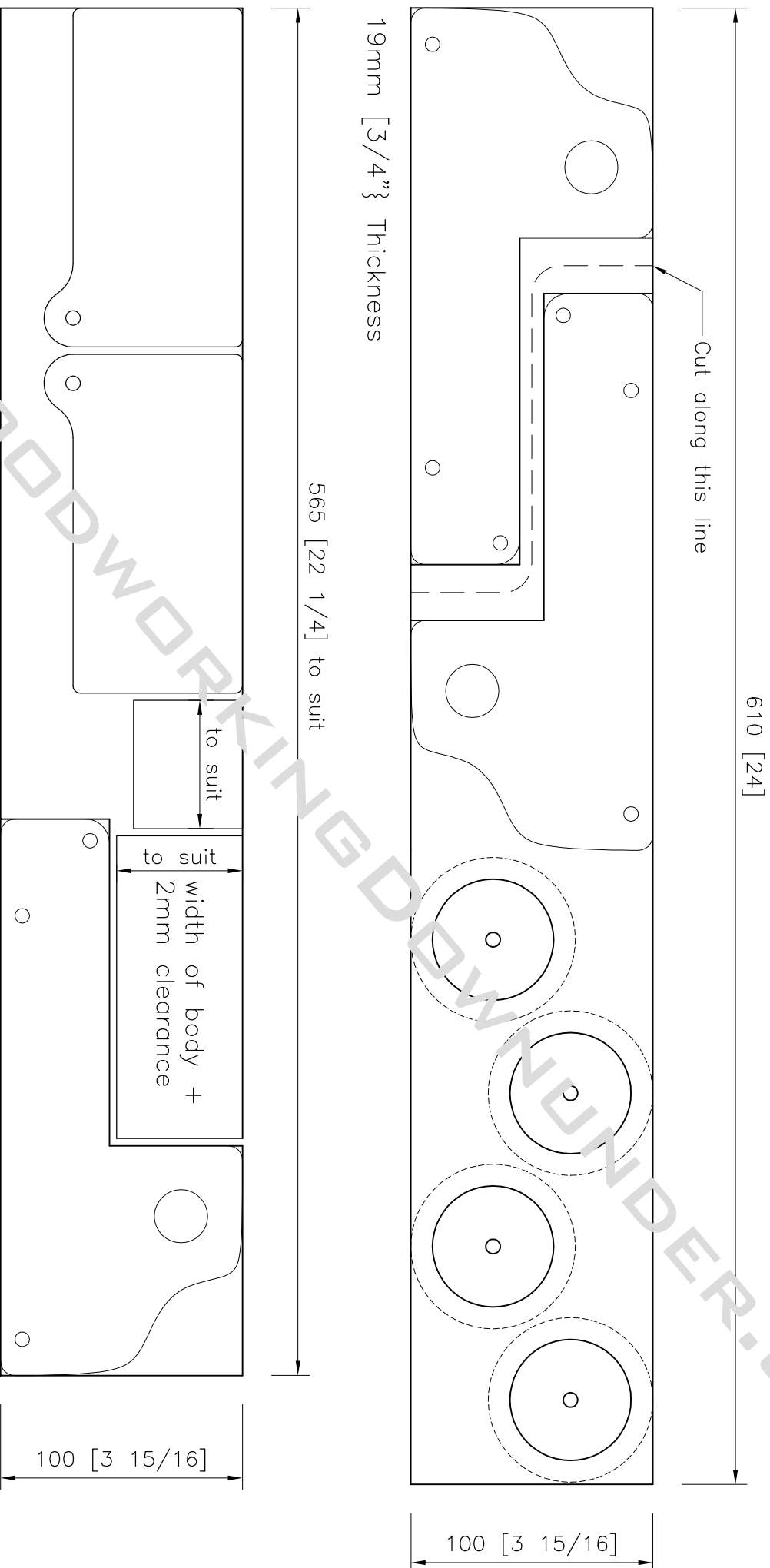
Notes:
Round over all edges.
Dimensions are indicative only.



Full Size Plan For A
Small Toy Tipper Truck

Notes:

Round over all edges.
Dimensions are indicative only.



12mm [1/2"] Thickness

Cutting Diagram
Not To Scale



Free Wooden Truck Plans

Mk3

Step by step instructions to make a mini toy tipper truck.



Measures about 100mm wide by 230mm long and 115mm high.

This toy dump truck is made up of two 19mm thick pieces with one 12mm piece in the middle. In the diagram below, the pieces shown green are 19mm or $\frac{3}{4}$ inch thick and the yellow represents 12mm or $\frac{1}{2}$ inch thick pieces. The wheels are shown red.

Tools

This toy can be made with a limited number of power tools. Safety is always the first consideration when dealing with such small pieces of timber.

Below is a list of some of the tools that I used to complete the project.

- [Power drill corded](#) or [battery powered](#).
- [Bandsaw](#).
- [Tenon saw](#), also known as a back saw.
- [Combination square](#).
- [Woodworking clamps](#).
- Hacksaw to cut the wooden dowels
- Wood file to round over all the edges.
- Sanding block with 120 and 80 grit sandpaper.
- 22mm [$\frac{7}{8}$ "] dia. Spade bit or Forstner bit.
- 6mm and 6.5mm drill bits.

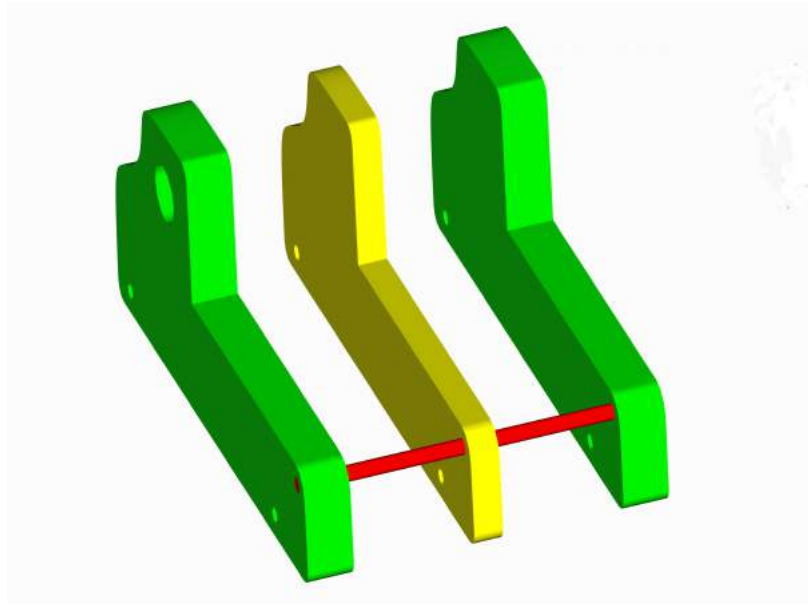


Step 1

It's always a good idea to study the plans first. These are guidelines only, your level of experience will no doubt supersede these suggestions.

Cut out the body parts and glue them together. Put it to one side to allow the glue to set. These parts may be slightly oversize to allow for truing up after the glue has set. The holes for the axles and tipper hinge are also drilled afterwards in step 4.

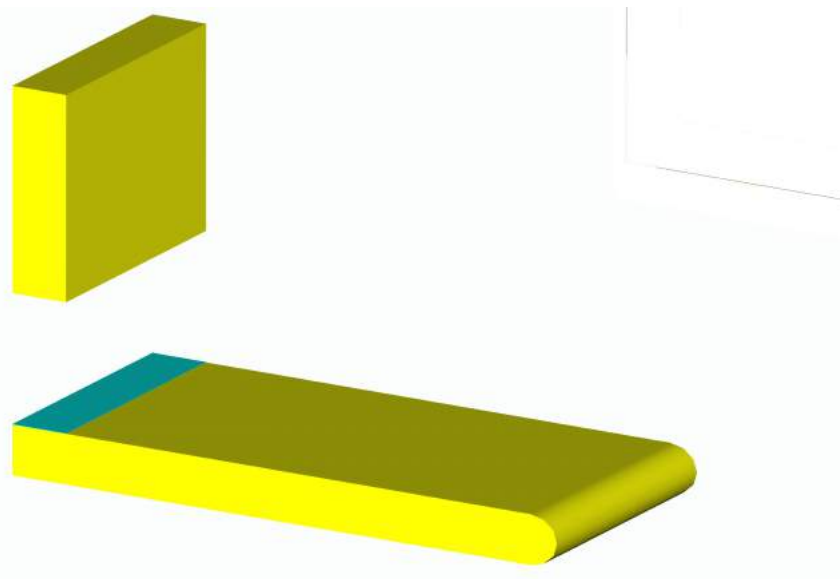
The diagram below shows the dowel (shown red) being used to keep the parts aligned under clamping pressure.



Step 2

Cut out the parts that make up the tipper. Note the floor and front should be about 2mm wider than the width of the body, as noted on the cutting diagram.

The floor and front of the tipper is made up first, to form an L-shape as shown in the diagram.

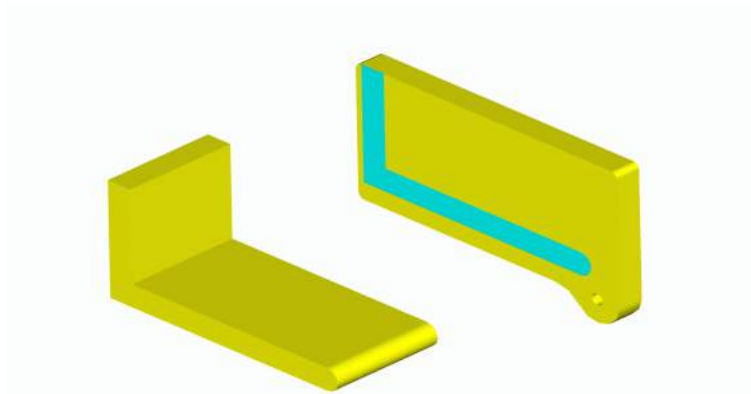




Step 3

The holes for the hinge are drilled for a snug fit. When the glue has set, glue each side of the tipper as shown below.

A note about this step that may not be obvious: the floor of the tipper is stopped short to allow for 180° rotation.



Step 4

Once the glue has set, it's time to finish off the truck body, if you have laminated it.

Drill the holes that represent the windows of the truck with a spade bit or a forstner bit. Round over all the edges. For the professional look, use a 3mm (1/8") roundover bit in a router mounted in a suitable router table.

Place the tipper assembly into position on the truck body and test the movement, then mark the hole for the hinge point. As mentioned before, the floor of the tipper assembly stops short to allow for a 180° rotation.

Drill the holes for the axles and the hinge point with a drill bit that is one size larger for a relaxed fit, a term I believe is used in the description of certain types of garment.

Fit the wheels, and the tipper assembly with a touch of glue to hold the dowels in place, and you're good to go.

The toy may be painted with food colouring or left natural as shown in the photographs on the first page.

Conclusion

I certainly hope you have enjoyed making this project. Use this [contact me](#) form if you would like to submit your project to the [photo gallery](#).